

# Model 27909 DECT6.0 Cordless Handset with Answering System & Speakerphone User's Guide



## INTRODUCTION

**CAUTION:** When using telephone equipment, there are basic safety instructions that should always be followed. Refer to the **IMPORTANT SAFETY INSTRUCTIONS** provided with this product and save them for future reference.

**IMPORTANT:** Because cordless phones operate on electricity, you should have at least one phone in your home that isn't cordless, in case the power in your home goes out.

## EQUIPMENT APPROVAL INFORMATION

Your telephone equipment is approved for connection to the Public Switched Telephone Network and is in compliance with parts 15 and 68 FCC Rules and Regulations and the Technical Regulations for Telephone Terminal Equipment notified by ACTA.

**1. Identification to the Local Telephone Company**  
On the bottom of this equipment is a label indicating, among other information, the US Number and Ringing Equipment Number (REN) for the equipment. You must, upon request, provide this information to your telephone company.

**2. The REN is useful in determining the number of devices you may connect to your telephone line and still have all of these devices ring when your telephone number is called.** In most but not all areas, the sum of the RENs of all devices connected to a single line should not exceed 5. To be certain of the number of devices you may connect to your line as determined by the REN, you should contact your local telephone company.

## INSTALLATION

**Digital Security System**  
Your own telephone equipment (you are not a party line). Check with your utility company for unauthorized access, and charges to your phone line.

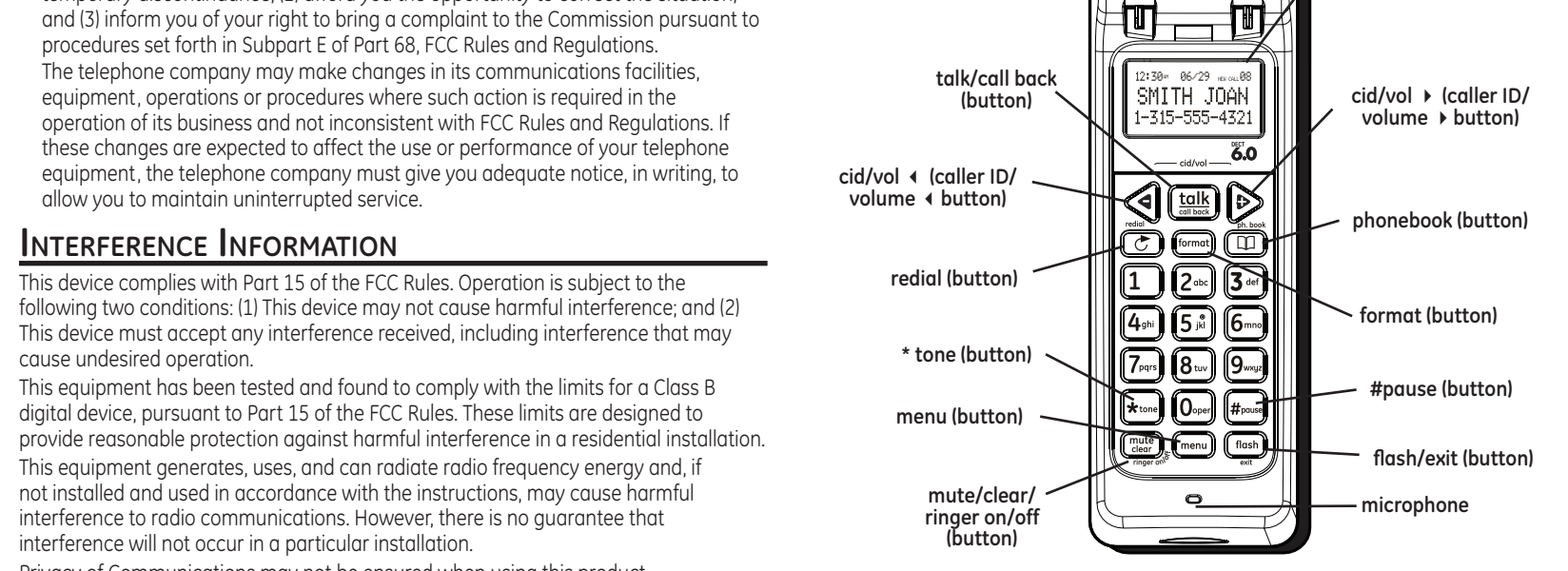
**INSTALLATION NOTE:** Some cordless telephones operate at frequencies that may cause or receive interference with nearby TVs, microwave ovens, and VCRs. To minimize or prevent such interference, the base of the cordless telephone should not be placed near or on top of a TV, microwave oven, or VCR. If such interference continues, move the cordless telephone farther away from these appliances.

**Certain other communications devices may also use the 1.9 GHz frequency for communication, and, if not properly set, these devices may interfere with each other and/or your new telephone. If you are concerned with interference, please refer to the owner's manual for these devices on how to properly set channels to avoid interference. Typical devices that use the 1.9 GHz frequency for communication include wireless audio/video senders, wireless computer networks, multi-handset cordless telephone systems, and some long-range cordless telephone systems.**

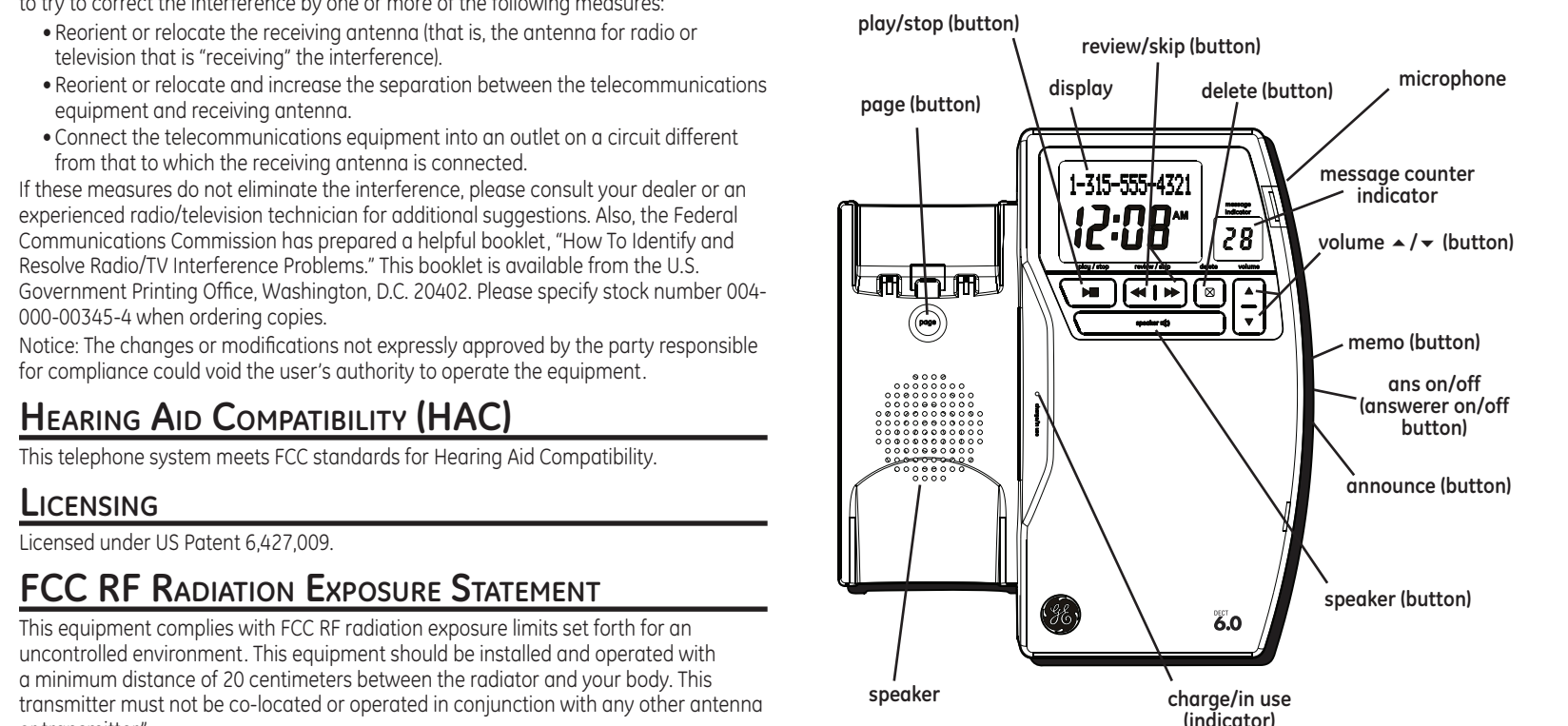
## Important Installation Guidelines

- Avoid sources of noise and heat, such as motors, fluorescent lighting, microwave ovens, hearing appliances and direct sunlight.
- Avoid areas of excessive dust, moisture and low temperature.
- Avoid other cordless telephones or personal computers.
- Never install telephone wiring during a lightning storm.
- Never install telephone jacks in wet locations unless the jack is specifically designed for wet locations.
- Never touch un-insulated telephone wires or terminals, unless the telephone line has been disconnected at the network interface.
- Your home has specially wired alarm equipment connected to the telephone line. Ensure the installation of this product does not disable your alarm equipment. If you have questions about when to disable alarm equipment, consult your telephone company or a qualified installer.

## BASE LAYOUT



## BASE LAYOUT



## INSTALLING THE PHONE

**Installing the Handset Battery**  
NOTE: You must connect the handset battery before use.

1. Label the battery which is packaged inside a plastic bag and is separate from the handset.
2. Locate the battery compartment on the back of the handset.
3. Plug the battery pack down into the jack inside the compartment.  
**NOTE: To ensure proper battery installation, the connector is keyed and can be inserted only one way.**



## Inserting a Pause in the Dialing Sequence

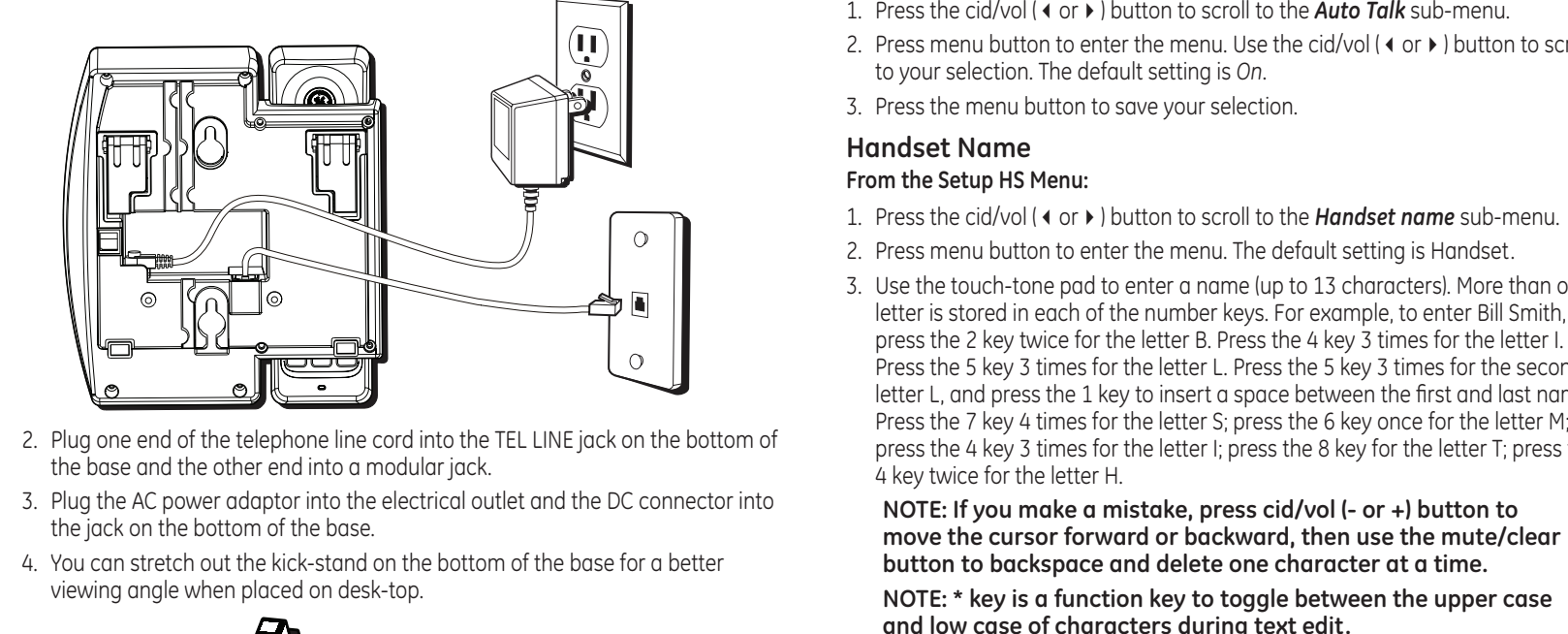
**Inserting a Pause in the Dialing Sequence**  
Press the **Pause** button on the handset to insert a pause in the dialing sequence. Press the **Pause** button on the handset to insert a pause in the dialing sequence. Press the **Pause** button on the handset to insert a pause in the dialing sequence.

## Answering System

**Answering System**  
When you receive an incoming call, the handset will ring and the base will answer the call. Press the **Answer** button on the handset to answer the call. Press the **Answer** button on the handset to answer the call.

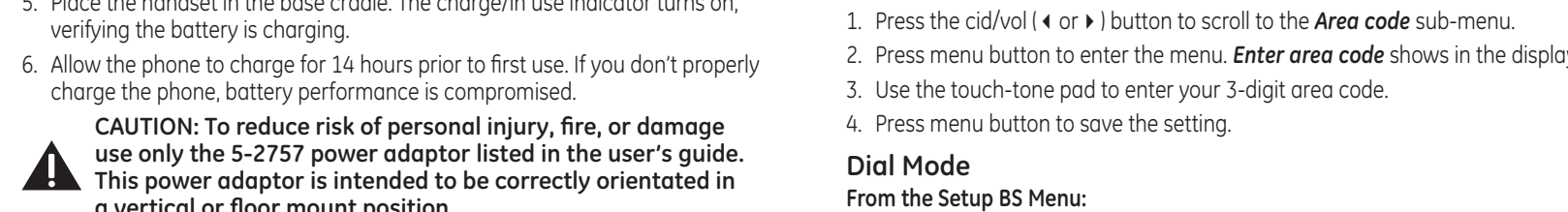
## Base Station

1. Choose an area near an electrical outlet and a telephone wall jack (RJ11C) and place your cordless telephone on a level surface, such as a desktop or tabletop, or you may mount it on the wall.



## Base Station Setup

1. Plug one end of the telephone line cord into the TEL LINE jack on the bottom of the base and the other end into a modular jack.
2. Plug one end of the telephone line cord into the TEL LINE jack on the bottom of the base and the other end into a modular jack.
3. Plug the AC power adaptor into the electrical outlet and the DC connector into the jack on the bottom of the base.  
You can stretch out the kick-stand on the bottom of the base for a better viewing angle when placed on desk-top.



## Area Code

The telephone uses the pre-programmed area code to determine the number format to display when a valid Caller ID record is received. The pre-programmed area code is also used for the Diablock feature.

## Base Station Setup

1. Make sure your phone is OFF (not in talk mode).
2. Press the menu button to go to the main menu.
3. Press **cid/vol** (◀ or ▶) button to scroll to **Setup BS**.
4. Press menu button to confirm and you may program the following items: Area Code, Dial mode and BS Backlight.

## Wall Mounting

1. Plug the AC power adaptor into the electrical outlet and the DC connector into the jack on the back of the base.
2. Plug one end of the straight telephone line cord into the jack on the bottom of the base and the other end into a modular jack.
3. Close the kick-stands on the bottom of the base unit if you've opened them before.
4. Feed the line cord through the groove and plug the end into the modular telephone jack.
5. Slip the mounting holes in the bottom of the basal over the wall plate posts and firmly slide the unit down into place.

## ANSWERING SYSTEM SETUP

This section shows you how to set up your answering system to receive incoming calls. Before you begin the set up process, you must turn on the answering system.

## NOTE: The answering system displays "--" when it is off.

## VOICE INSTRUCTIONS

If you need additional assistance, while in standby mode, press the review button on the base and follow the voice instructions.

## Speaker Volume

Use the volume (◀ or ▶) buttons to adjust speaker volume on the base to a comfortable level. Press the volume (◀ or ▶) buttons on the handset to adjust the volume to a comfortable level. Press the volume (◀ or ▶) buttons on the handset to adjust the volume to a comfortable level.

## Recording the Outgoing Announcement

For best results when recording, you should be about one inch from the microphone, and eliminate as much background noise as possible.

## NOTE: If you choose not to record an outgoing announcement, a default announcement plays instead. To return to the default announcement after you have recorded your own outgoing announcement, press the **Record** button and release it when you hear the beep. Or, press the delete button while the announcement is playing.

## PROGRAMMING THE TELEPHONE

### Standby Screen

The handset displays the handset name, date, time, signal and battery status. The base displays the current date and time.

### NOTE: If the clock is not set, the date and time display will blink. The blinking will stop when you updates the date/time from the Handset menu, or the base receives a call with CID having date and time stamp.

### Programming Functions

The system uses a menu structure to give you access to all of the built-in features. You may program the following items in main menu: Intercom, Setup HS, Setup BS, Date/Time, Registration and Answer Machine.

### NOTE: If the handset is not registered, or is out of range, Setup BS and Date/Time are not programmable, and Unavailable displays as you try to enter these two menus.

### NOTE: During programming, you may press the mute/clear button at any time to exit the sub-menu and return to the main menu, or press flash/exit to exit programming and return to standby screen.

### NOTE: If any key is pressed for 60 seconds, the handset will automatically exit programming and return to standby screen.

## Handset Setup

1. Hold the handset where it is OFF (not in talk mode).
2. Press the menu button to go to the main menu.
3. Press **cid/vol** (◀ or ▶) button to scroll to **Setup HS**.
4. Press menu button to confirm and you may program the following items: Ring Volume, Tones, Auto Talk, Handset Name and Language.

## Language

**From the Setup HS Menu:**  
1. Press the **cid/vol** (◀ or ▶) button to scroll to the **Language** sub-menu.  
2. Press menu button to enter the menu.  
3. Use the **cid/vol** (◀ or ▶) button to select **English, Français or Español**. The default setting is English.  
4. Press the menu button to save your selection.

## Ring Volume

There are 4 volume levels for your selection. They are volume 1 to 3 and Ringer off respectively.  
**From the Setup HS Menu:**  
1. Press the **cid/vol** (◀ or ▶) button to scroll to the **Ring Volume** sub-menu.  
2. Press menu button to enter the menu. Use the **cid/vol** (◀ or ▶) button to scroll to your selection. The default setting is VOL 3.  
3. Press the menu button to save your selection.

## Ring to answer

This feature lets you select the number of times you want the phone to ring before the answering system answers a call.

## NOTE: If you select TOLL SAVER, the unit answers after the 3rd ring if there are NEW messages in the answering system, OR the unit answers after the 6th ring if there are NO new messages. Then, when you access the answering system from another remote location, you may hang up after 4 rings to save long distance charges.

## NOTE: If you select TOLL SAVER, the unit answers after the 3rd ring if there are NEW messages in the answering system, OR the unit answers after the 6th ring if there are NO new messages. Then, when you access the answering system from another remote location, you may hang up after 4 rings to save long distance charges.

## NOTE: If you select TOLL SAVER, the unit answers after the 3rd ring if there are NEW messages in the answering system, OR the unit answers after the 6th ring if there are NO new messages. Then, when you access the answering system from another remote location, you may hang up after 4 rings to save long distance charges.

## NOTE: If you select TOLL SAVER, the unit answers after the 3rd ring if there are NEW messages in the answering system, OR the unit answers after the 6th ring if there are NO new messages. Then, when you access the answering system from another remote location, you may hang up after 4 rings to save long distance charges.

## NOTE: If you select TOLL SAVER, the unit answers after the 3rd ring if there are NEW messages in the answering system, OR the unit answers after the 6th ring if there are NO new messages. Then, when you access the answering system from another remote location, you may hang up after 4 rings to save long distance charges.

## NOTE: If you select TOLL SAVER, the unit answers after the 3rd ring if there are NEW messages in the answering system, OR the unit answers after the 6th ring if there are NO new messages. Then, when you access the answering system from another remote location, you may hang up after 4 rings to save long distance charges.

## NOTE: If you select TOLL SAVER, the unit answers after the 3rd ring if there are NEW messages in the answering system, OR the unit answers after the 6th ring if there are NO new messages. Then, when you access the answering system from another remote location, you may hang up after 4 rings to save long distance charges.

## NOTE: If you select TOLL SAVER, the unit answers after the 3rd ring if there are NEW messages in the answering system, OR the unit answers after the 6th ring if there are NO new messages. Then, when you access the answering system from another remote location, you may hang up after 4 rings to save long distance charges.

## NOTE: If you select TOLL SAVER, the unit answers after the 3rd ring if there are NEW messages in the answering system, OR the unit answers after the 6th ring if there are NO new messages. Then, when you access the answering system from another remote location, you may hang up after 4 rings to save long distance charges.

## NOTE: If you select TOLL SAVER, the unit answers after the 3rd ring if there are NEW messages in the answering system, OR the unit answers after the 6th ring if there are NO new messages. Then, when you access the answering system from another remote location, you may hang up after 4 rings to save long distance charges.

## NOTE: If you select TOLL SAVER, the unit answers after the 3rd ring if there are NEW messages in the answering system, OR the unit answers after the 6th ring if there are NO new messages. Then, when you access the answering system from another remote location, you may hang up after 4 rings to save long distance charges.

## NOTE: If you select TOLL SAVER, the unit answers after the 3rd ring if there are NEW messages in the answering system, OR the unit answers after the 6th ring if there are NO new messages. Then, when you access the answering system from another remote location, you may hang up after 4 rings to save long distance charges.

## NOTE: If you select TOLL SAVER, the unit answers after the 3rd ring if there are NEW messages in the answering system, OR the unit answers after the 6th ring if there are NO new messages. Then, when you access the answering system from another remote location, you may hang up after 4 rings to save long distance charges.

## NOTE: If you select TOLL SAVER, the unit answers after the 3rd ring if there are NEW messages in the answering system, OR the unit answers after the 6th ring if there are NO new messages. Then, when you access the answering system from another remote location, you may hang up after 4 rings to save long distance charges.

## NOTE: If you select TOLL SAVER, the unit answers after the 3rd ring if there are NEW messages in the answering system, OR the unit answers after the 6th ring if there are NO new messages. Then, when you access the answering system from another remote location, you may hang up after 4 rings to save long distance charges.

## NOTE: If you select TOLL SAVER, the unit answers after the 3rd ring if there are NEW messages in the answering system, OR the unit answers after the 6th ring if there are NO new messages. Then, when you access the answering system from another remote location, you may hang up after 4 rings to save long distance charges.

## NOTE: If you select TOLL SAVER, the unit answers after the 3rd ring if there are NEW messages in the answering system, OR the unit answers after the 6th ring if there are NO new messages. Then, when you access the answering system from another remote location, you may hang up after 4 rings to save long distance charges.

## NOTE: If you select TOLL SAVER, the unit answers after the 3rd ring if there are NEW messages in the answering system, OR the unit answers after the 6th ring if there are NO new messages. Then, when you access the answering system from another remote location, you may hang up after 4 rings to save long distance charges.

## NOTE: If you select TOLL SAVER, the unit answers after the 3rd ring if there are NEW messages in the answering system, OR the unit answers after the 6th ring if there are NO new messages. Then, when you access the answering system from another remote location, you may hang up after 4 rings to save long distance charges.

## NOTE: If you select TOLL SAVER, the unit answers after the 3rd ring if there are NEW messages in the answering system, OR the unit answers after the 6th ring if there are NO new messages. Then, when you access the answering system from another remote location, you may hang up after 4 rings to save long distance charges.

## NOTE: If you select TOLL SAVER, the unit answers after the 3rd ring if there are NEW messages in the answering system, OR the unit answers after the 6th ring if there are NO new messages. Then, when you access the answering system from another remote location, you may hang up after 4 rings to save long distance charges.

## NOTE: If you select TOLL SAVER, the unit answers after the 3rd ring if there are NEW messages in the answering system, OR the unit answers after the 6th ring if there are NO new messages. Then, when you access the answering system from another remote location, you may hang up after 4 rings to save long distance charges.

## NOTE: If you select TOLL SAVER, the unit answers after the 3rd ring if there are NEW messages in the answering system, OR the unit answers after the 6th ring if there are NO new messages. Then, when you access the answering system from another remote location, you may hang up after 4 rings to save long distance charges.

## NOTE: If you select TOLL SAVER, the unit answers after the 3rd ring if there are NEW messages in the answering system, OR the unit answers after the 6th ring if there are NO new messages. Then, when you access the answering system from another remote location, you may hang up after 4 rings to save long distance charges.

## NOTE: If you select TOLL SAVER, the unit answers after the 3rd ring if there are NEW messages in the answering system, OR the unit answers after the 6th ring if there are NO new messages. Then, when you access the answering system from another remote location, you may hang up after 4 rings to save long distance charges.

## NOTE: If you select TOLL SAVER, the unit answers after the 3rd ring if there are NEW messages in the answering system, OR the unit answers after the 6th ring if there are NO new messages. Then, when you access the answering system from another remote location, you may hang up after 4 rings to save long distance charges.

## NOTE: If you select TOLL SAVER, the unit answers after the 3rd ring if there are NEW messages in the answering system, OR the unit answers after the 6th ring if there are NO new messages. Then, when you access the answering system from another remote location, you may hang up after 4 rings to save long distance charges.

## NOTE: If you select TOLL SAVER, the unit answers after the 3rd ring if there are NEW messages in the answering system, OR the unit answers after the 6th ring if there are NO new messages. Then, when you access the answering system from another remote location, you may hang up after 4 rings to save long distance charges.

## NOTE: If you select TOLL SAVER, the unit answers after the 3rd ring if there are NEW messages in the answering system, OR the unit answers after the 6th ring if there are NO new messages. Then, when you access the answering system from another remote location, you may hang up after 4 rings to save long distance charges.

## NOTE: If you select TOLL SAVER, the unit answers after the 3rd ring if there are NEW messages in the answering system, OR the unit answers after the 6th ring if there are NO new messages. Then, when you access the answering system from another remote location, you may hang up after 4 rings to save long distance charges.

## NOTE: If you select TOLL SAVER, the unit answers after the 3rd ring if there are NEW messages in the answering system, OR the unit answers after the 6th ring if there are NO new messages. Then, when you access the answering system from another remote location, you may hang up after 4 rings to save long distance charges.

## NOTE: If you select TOLL SAVER, the unit answers after the 3rd ring if there are NEW messages in the answering system, OR the unit answers after the 6th ring if there are NO new messages. Then, when you access the answering system from another remote location, you may hang up after 4 rings to save long distance charges.

## NOTE: If you select TOLL SAVER, the unit answers after the 3rd ring if there are NEW messages in the answering system, OR the unit answers after the 6th ring if there are NO new messages. Then, when you access the answering system from another remote location, you may hang up after 4 rings to save long distance charges.

## NOTE: If you select TOLL SAVER, the unit answers after the 3rd ring if there are NEW messages in the answering system, OR the unit answers after the 6th ring if there are NO new messages. Then, when you access the answering system from another remote location, you may hang up after 4 rings to save long distance charges.

## NOTE: If you select TOLL SAVER, the unit answers after the 3rd ring if there are NEW messages in the answering system, OR the unit answers after the 6th ring if there are NO new messages. Then, when you access the answering system from another remote location, you may hang up after 4 rings to save long distance charges.

## NOTE: If you select TOLL SAVER, the unit answers after the 3rd ring if there are NEW messages in the answering system, OR the unit answers after the 6th ring if there are NO new messages. Then, when you access the answering system from another remote location, you may hang up after 4 rings to save long distance charges.

## NOTE: If you select TOLL SAVER, the unit answers after the 3rd ring if there are NEW messages in the answering system, OR the unit answers after the 6th ring if there are NO new messages. Then, when you access the answering system from another remote location, you may hang up after 4 rings to save long distance charges.

## NOTE: If you select TOLL SAVER, the unit answers after the 3rd ring if there are NEW messages in the answering system, OR the unit answers after the 6th ring if there are NO new messages. Then, when you access the answering system from another remote location, you may hang up after 4 rings to save long distance charges.

## NOTE: If you select TOLL SAVER, the unit answers after the 3rd ring if there are NEW messages in the answering system, OR the unit answers after the 6th ring if there are NO new messages. Then, when you access the answering system from another remote location, you may hang up after 4 rings to save long distance charges.

## NOTE: If you select TOLL SAVER, the unit answers after the 3rd ring if there are NEW messages in the answering system, OR the unit answers after the 6th ring if there are NO new messages. Then, when you access the answering system from another remote location, you may hang up after 4 rings to save long distance charges.

## NOTE: If you select TOLL SAVER, the unit answers after the 3rd ring if there are NEW messages in the answering system, OR the unit answers after the 6th ring if there are NO new messages. Then, when you access the answering system from another remote location, you may hang up after 4 rings to save long distance charges.

## NOTE: If you select TOLL SAVER, the unit answers after the 3rd ring if there are NEW messages in the answering system, OR the unit answers after the 6th ring if there are NO new messages. Then, when you access the answering system from another remote location, you may hang up after 4 rings to save long distance charges.

## NOTE: If you select TOLL SAVER, the unit answers after the 3rd ring if there are NEW messages in the answering system, OR the unit answers after the 6th ring if there are NO new messages. Then, when you access the answering system from another remote location, you may hang up after 4 rings to save long distance charges.

## NOTE: If you select TOLL SAVER, the unit answers after the 3rd ring if there are NEW messages in the answering system, OR the unit answers after the 6th ring if there are NO new messages. Then, when you access the answering system from another remote location, you may hang up after 4 rings to save long distance charges.

## NOTE: If you select TOLL SAVER, the unit answers after the 3rd ring if there are NEW messages in the answering system, OR the unit answers after the 6th ring if there are NO new messages. Then, when you access the answering system from another remote location, you may hang up after 4 rings to save long distance charges.

## NOTE: If you select TOLL SAVER, the unit answers after the 3rd ring if there are NEW messages in the answering system, OR the unit answers after the 6th ring if there are NO new messages. Then, when you access the answering system from another remote location, you may hang up after 4 rings to save long distance charges.

## NOTE: If you select TOLL SAVER, the unit answers after the 3rd ring if there are NEW messages in the answering system, OR the unit answers after the 6th ring if there are NO new messages. Then, when you access the answering system from another remote location, you may hang up after 4 rings to save long distance charges.

## NOTE: If you select TOLL SAVER, the unit answers after the 3rd ring if there are NEW messages in the answering system, OR the unit answers after the 6th ring if there are NO new messages. Then, when you access the answering system from another remote location, you may hang up after 4 rings to save long distance charges.

## NOTE: If you select TOLL SAVER, the unit answers after the 3rd ring if there are NEW messages in the answering system, OR the unit answers after the 6th ring if there are NO new messages. Then, when you access the answering system from another remote location, you may hang up after 4 rings to save long distance charges.

## NOTE: If you select TOLL SAVER, the unit answers after the 3rd ring if there are NEW messages in the answering system, OR the unit answers after the 6th ring if there are NO new messages. Then, when you access the answering system from another remote location, you may hang up after 4 rings to save long distance charges.

## NOTE: If you select TOLL SAVER, the unit answers after the 3rd ring if there are NEW messages in the answering system, OR the unit answers after the 6th ring if there are NO new messages. Then, when you access the answering system from another remote location, you may hang up after 4 rings to save long distance charges.

## NOTE: If you select TOLL SAVER, the unit answers after the 3rd ring if there are NEW messages in the answering system, OR the unit answers after the 6th ring if there are NO new messages. Then, when you access the answering system from another remote location, you may hang up after 4 rings to save long distance charges.

## NOTE: If you select TOLL SAVER, the unit answers after the 3rd ring if there are NEW messages in the answering system, OR the unit answers after the 6th ring if there are NO new messages. Then, when you access the answering system from another remote location, you may hang up after 4 rings to save long distance charges.

## NOTE: If you select TOLL SAVER, the unit answers after the 3rd ring if there are NEW messages in the answering system, OR the unit answers after the 6th ring if there are NO new messages. Then, when you access the answering system from another remote location, you may hang up after 4 rings to save long distance charges.

## NOTE: If you select TOLL SAVER, the unit answers after the 3rd ring if there are NEW messages in the answering system, OR the unit answers after the 6th ring if there are NO new messages. Then, when you access the answering system from another remote location, you may hang up after 4 rings to save long distance charges.

## NOTE: If you select TOLL SAVER, the unit answers after the 3rd ring if there are NEW messages in the answering system, OR the unit answers after the 6th ring if there are NO new messages. Then, when you access the answering system from another remote location, you may hang up after 4 rings to save long distance charges.

## NOTE: If you select TOLL SAVER, the unit answers after the 3rd ring if there are NEW messages in the answering system, OR the unit answers after the 6th ring if there are NO new messages. Then, when you access the answering system from another remote location, you may hang up after 4 rings to save long distance charges.

## NOTE: If you select TOLL SAVER, the unit answers after the 3rd ring if there are NEW messages in the answering system, OR the unit answers after the 6th ring if there are NO new messages. Then, when you access the answering system from another remote location, you may hang up after 4 rings to save long distance charges.

## NOTE: If you select TOLL SAVER, the unit answers after the 3rd ring if there are NEW messages in the answering system, OR the unit answers after the 6th ring if there are NO new messages. Then, when you access the answering system from another remote location, you may hang up after 4 rings to save long distance charges.

## NOTE: If you select TOLL SAVER, the unit answers after the 3rd ring if there are NEW messages in the answering system, OR the unit answers after the 6th ring if there are NO new messages. Then, when you access the answering system from another remote location, you may hang up after 4 rings to save long distance charges.

## NOTE: If you select TOLL SAVER, the unit answers after the 3rd ring if there are NEW messages in the answering system, OR the unit answers after the 6th ring if there are NO new messages. Then, when you access the answering system from another remote location, you may hang up after 4 rings to save long distance charges.

## NOTE: If you select TOLL SAVER, the unit answers after the 3rd ring if there are NEW messages in the answering system, OR the unit answers after the 6th ring if there are NO new messages. Then, when you access the answering system from another remote location, you may hang up after 4 rings to save long distance charges.

## NOTE: If you select TOLL SAVER, the unit answers after the 3rd ring if there are NEW messages in the answering system, OR the unit answers after the 6th ring if there are NO new messages. Then, when you access the answering system from another remote location, you may hang up after 4 rings to save long distance charges.

## NOTE: If you select TOLL SAVER, the unit answers after the 3rd ring if there are NEW messages in the answering system, OR the unit answers after the 6th ring if there are NO new messages. Then, when you access the answering system from another remote location, you may hang up after 4 rings to save long distance charges.

## NOTE: If you select TOLL SAVER, the unit answers after the 3rd ring if there are NEW messages in the answering system, OR the unit answers after the 6th ring if there are NO new messages. Then, when you access the answering system from another remote location, you may hang up after 4 rings to save long distance charges.

## NOTE: If you select TOLL SAVER, the unit answers after the 3rd ring if there are NEW messages in the answering system, OR the unit answers after the 6th ring if there are